



BYDA
BYDA INTERNATIONAL

Lift your evidence to the highest level

gellifters[®]

Risk-free lifting

Easy to use

Lift from virtually every surface

One product, many applications

No air bubbles

Weak traces are clearly visualized

Sharpness and rich contrast

Quality from start to finish



BVDA
BVDA INTERNATIONAL

gellifters[®]

Lift your evidence to the highest level

Risk-free lifting

Gellifters make it possible to lift the same print multiple times without the risk of destroying it. Also, there is minimal or no risk of damaging the surface of the exhibit.

Easy to use

The flexibility of the Gellifter makes it easy to apply on any surface. The low-tack adhesive makes it easy to remove.

One product, many applications

Lift powdered fingerprints, untreated fingerprints, fingerprints developed with cyanoacrylate, fingerprints in/on latex and vinyl gloves, shoe impressions in dust, traces in blood, dye-stained finger- and shoeprints in blood, earprints, indented writing, micro traces and fibers.

Lift from virtually every surface

Porous or non-porous, flat or curved, smooth or rough: a black, white or transparent Gellifter will do the job.

No air bubbles

The thick gelatin layer of Gellifters eliminates the risk of trapping air bubbles when lifting prints from rough surfaces. This ensures a complete lift of the print, without gaps.

Weak traces are clearly visualized

Even the weakest traces become clearly visible when lifted with a black Gellifter. Its jet-black color and the high-gloss finish of its gelatin layer provide the right background to visualize the weakest traces.

Sharpness and rich contrast

The jet black color of the black Gellifters and the high-gloss finish provide a perfect combination of absorption and reflection.

Used with the right illumination, it achieves a crisp image in which the print is perfectly contrasted with the background.

Quality from start to finish

High standards of quality are maintained both in the production and packaging of Gellifters. We check every single Gellifter, just before packaging, to make sure that only the best ends up with you at the crime scene.



OLD, DRIED-UP FINGERPRINTS ON GLASS, PHOTOGRAPHED WITH OBLIQUE LIGHTING.



THE SAME FINGERPRINTS, WITH NO FURTHER TREATMENT, LIFTED WITH A BLACK GELLIFTER.



FINGERPRINTS DEVELOPED WITH MAGNETIC FINGERPRINT POWDER AND LIFTED WITH A COMMONLY USED LIFTING TAPE.



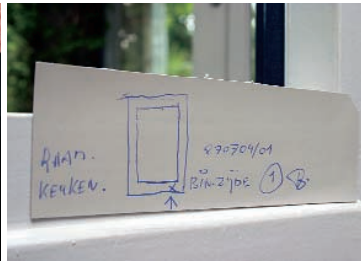
FINGERPRINTS DEVELOPED WITH MAGNETIC POWDER AND LIFTED WITH A TRANSPARENT GELLIFTER. NOTE THE ABSENCE OF AIR BUBBLES.



FINGERPRINTS FROM WINDOW FOUND AND DEVELOPED WITH SILVER-COLORED FINGERPRINT POWDER.



APPLYING A BLACK GELLIFTER.



THE LINEN-RUBBER BACKING OF THE GELLIFTER PROVIDES AMPLE SPACE FOR NOTES.



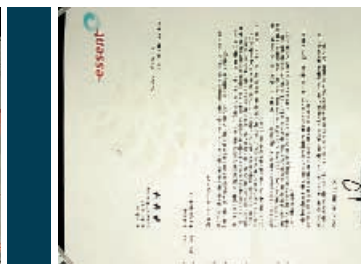
HIGHLY CONTRASTED RESULT OF THE POWDERED FINGERPRINTS ON A BLACK GELLIFTER (IMAGE REVERSED).



FINGERPRINTS IN BLOOD ON A SODA CAN.



FINGERPRINTS ON SODA CAN, TREATED WITH HUNGARIAN RED AND COVERED WITH WHITE GELLIFTER; FINGERPRINTS ARE COPIED ON THE WHITE GELLIFTER.



A MUDDY SHOEPRINT ON PAPER.



A BLACK GELLIFTER WAS LEFT ON THE PRINT FOR ONE MINUTE; PAPER WAS TREATED WITH 5-MTN AND VIEWED IN FLUORESCENCE.

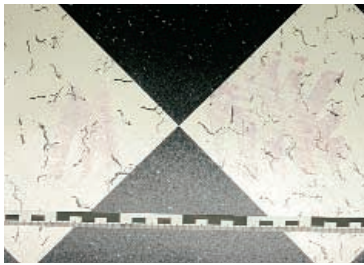
Black Gellifters White Gellifters Transparent Gellifters

Unlike other lifting media, BVDA Gellifters have been especially developed for the lifting of fingerprints, shoeprints, dust marks and micro traces. The thick, non-aggressive, low-tack gelatin layer allows traces to be lifted from almost every surface, including porous material such as paper and cardboard. Lifted prints can be transported for photography or closer examination.

The gelatin layer of these Gellifters features two special qualities: jet-black color and the high-gloss finish. The high-gloss provides for a reflection of light from the illumination source. Any light not reflected by the gelatin layer will be absorbed. Traces picked up by the Gellifter, however, will reflect the light in all directions. The end result is a high contrast between the lifted material and the gelatin layer. Black fingerprint powders, lifted with a black Gellifter yield images that are sharp and rich in contrast.

The gelatin layer of the white Gellifter absorbs blood and dyes from staining solutions. These traces can easily be copied onto the gelatin layer and then viewed free from a interfering background. The extreme white color of this Gellifter has a low fluorescence. Staining solutions which fluoresce when excited with green light (e.g., Hungarian Red) will therefore show up in high contrast to the gelatin layer. We advise that shoeprints in dust be lifted with the black Gellifters, even when lifting dark-colored prints that intuitively would seem to contrast better on white Gellifters. A clearer and better contrasting result is always obtained with a black Gellifter.

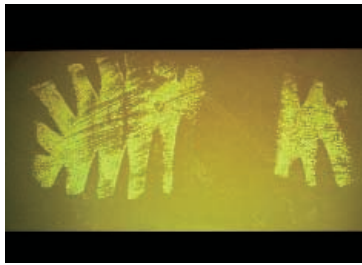
These Gellifters are used mainly to lift fingerprints and to make comparison shoeprints. Their advantage is that they provide a positive image of a print. Unlike tape products for lifting prints, the Gellifter has a low-tack adhesive layer which is thick enough to lift complete prints from rough or polluted surfaces. Fingerprint powder and impurities that may remain on a print after powdering do not cause missing spots in the lift due to bubbles caught between the adhesive layer and the surface.



SHOEPRINT IN BLOOD ON VINYL FLOORING, STAINED WITH HUNGARIAN RED. THE PRINT CONTRASTS POORLY WITH THE BACKGROUND.



THE SHOEPRINT COPIED ONTO A WHITE GELLIFTER, WITH CONTRAST ALREADY IMPROVED.



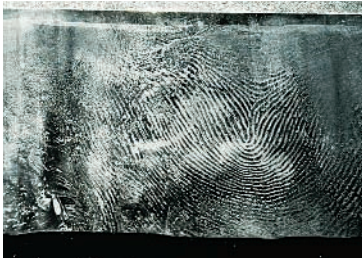
THE SAME SHOEPRINT ON THE WHITE GELLIFTER, SEEN IN FLUORESCENCE, SHOWS FURTHER IMPROVEMENT.



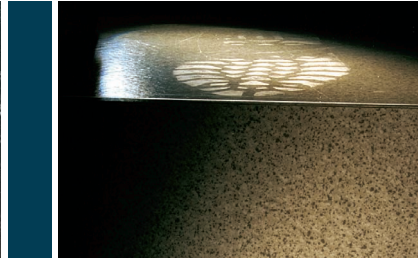
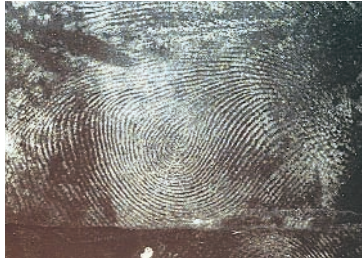
LATENT FINGERPRINT ON PACKING TAPE, PHOTOGRAPHED WITH OBLIQUE LIGHTING.



USED LATEX GLOVES, LEFT BEHIND AT A CANNABIS-GROWING OPERATION.



FINGERPRINTS FROM THE GLOVES, RICHLY CONTRASTED ON A BLACK GELLIFTER.



FINGERPRINTS ON A PLASTIC BUTTER PACKAGE, DEVELOPED WITH CYANOACRYLATE.



THE FINGERPRINTS STAINED. THE SURFACE HAS ABSORBED THE STAINING SOLUTION, RESULTING IN A COMPLETE LOSS OF CONTRAST.



THE SAME PRINTS LIFTED AND PERFECTLY CONTRASTED ON A BLACK GELLIFTER (IMAGE REVERSED).



Easy to use - impressive flexibility Notation Economy

The transparent Gellifters have a clear polyester backing, the black and white, a backing of white rubberized linen. These backings give the Gellifters the impressive flexibility that together with the low-tack adhesive property of the gelatin layer makes the Gellifter so easy to use. In contrast to electrostatic techniques of lifting shoe impressions in dust, Gellifters require no additional equipment (other than perhaps a roller). The Gellifter has no residual charge that attracts dust and debris or draws the lifter toward another surface. The gelatin layer securely holds the print in place.

The transparent Gellifters have non-stick paper edges that provide a space for notations. The paper also helps to separate the protective cover from the lifter. The white linen-rubber backing of the black and white Gellifters likewise provides ample space to make notes. All three types can be written on with a normal ball-point pen.

The Gellifters come in various pre-cut sizes. However, they can simply be cut with scissors to a size that is needed to suit a particular job.

When lifting a print, you are normally limited to only a few attempts. To make the most of your Gellifters, choosing the right color for a typical trace is therefore of utmost importance. The chart below helps you to make the best choice and achieve the best possible result.





THE FINGERPRINT DEVELOPED USING POWDER FOR ADHESIVE SIDES OF TAPES.



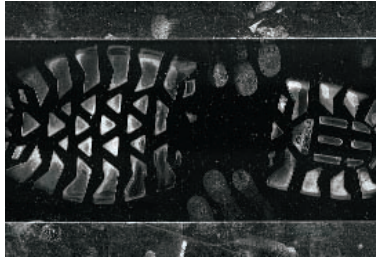
THE DEVELOPED FINGERPRINT LIFTED WITH A BLACK GELLIFTER (IMAGE REVERSED).



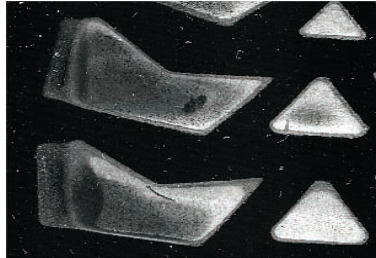
EARPRINT ON A DOOR, DEVELOPED WITH SILVER FINGERPRINT POWDER



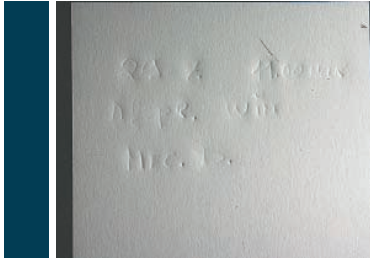
THE EARPRINT AFTER BEING LIFTED WITH A BLACK GELLIFTER (IMAGE REVERSED).



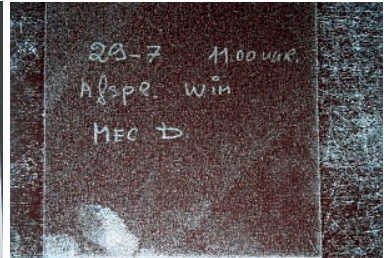
LIFT OF A SHOEPRINT IN DUST ON A BLACK GELLIFTER.



DETAIL OF THE SHOEPRINT. NOTE THAT MINUTE DAMAGE/ FLAWS AND THE WEAR OF THE SHOE ARE CLEARLY VISIBLE.



INDENTED WRITING ON A WHITE SHEET OF PAPER, PHOTOGRAPHED USING OBLIQUE LIGHTING.



INDENTED WRITING LIFTED WITH A BLACK GELLIFTER (IMAGE REVERSED).



FINGERPRINTS FROM HUMAN SKIN.



LIFTED WITH A BLACK GELLIFTER.



FINGERPRINT ON FABRIC.



LIFTED WITH A BLACK GELLIFTER.

color selection chart

Black

- Untreated fingerprints
- Fingerprints developed with:
 - Powders (all types, even black)
 - Cyanoacrylate
 - SPR
 - Powder used on the adhesive side of certain tapes
- Fingerprints in/on latex and vinyl gloves
- Old fingerprints (relifting or improving)
- Postmortem fingerprinting
- Shoeprints in dust
- Muddy shoeprints on paper
- Earprints
- Micro traces
- Indented writing

White

- Traces in blood
- Traces in blood after chemical enhancement
- Old prints (improving)
- Prints in staining solutions
- Muddy shoeprints on non-porous surfaces stained with Safranin O


Transparent

- Fingerprints developed with fingerprint powders (to obtain a positive image)
- Comparison shoeprints

For a full description of these applications, please refer to the users manual for BVDA Gellifters, available for download from www.bvda.com



delivery program

Cat. no.	Description		
B 11000	Gellifters® black, 5.2 x 7.2", pack of 10 sheets	 BVDA INTERNATIONAL BV HANS STÖCKLE GMBH P.O. BOX 2323, POSTFACH 600861 2002 CH HAARLEM 81208 MÜNCHEN THE NETHERLANDS GERMANY T +31 (0)23 5424 708 T +49 (0)89 87 14 855 F +31 (0)23 5322 358 F +49 (0)89 87 14 336 INFO@BVDA.NL HANS-STOECKLE-GMBH@T-ONLINE.DE BVDA AMERICA INC. KTM-KRIM. TEKNISK P.O. BOX 267 MATERIEL AB NORWAY, ME 04268 P.O. BOX 171 USA 746 24 BÅLSTA SWEDEN TOLL FREE 866.448.6612 T 207.739.2308 T +46 (0)171 58 680 F 207.739.2310 F +46 (0)171 58 690 INFO.USA@BVDA.COM KTM.AB@KTM-KRIM.SE	
B 11500	Gellifters® black, 3.6 x 7.2", pack of 10 sheets		
B 12000	Gellifters® black, 5.2 x 14.4", pack of 2 sheets		
B 12500	Gellifters® black, 7.2 x 14.4", pack of 2 sheets		
B 14000	Gellifters® white, 5.2 x 7.2", pack of 10 sheets		
B 14500	Gellifters® white, 3.6 x 7.2", pack of 10 sheets		
B 15000	Gellifters® white, 5.2 x 14.4", pack of 2 sheets		
B 15500	Gellifters® white, 7.2 x 14.4", pack of 2 sheets		
B 17000	Gellifters® transparent, 5.2 x 7.2", pack of 10 sheets		
B 18000	Gellifters® transparent, 5.2 x 14.4", pack of 2 sheets		
B 18200	Gellifters® transparent, 7.2 x 14.4", pack of 2 sheets		