

Staining of traces in blood

Coomassie Blue, a reagent like Amido Black that stains proteins, is methanol-based. Traces in blood are stained blue to purple.

Cat. No.

B - 88700

B - 88500

Description

Coomassie Blue, 500 ml staining solution in a spray bottle.

“Crowle’s Stain”, also a protein stain, colors traces in blood red. It contains a toxic substance (trichloroacetic acid) but is water-based.

Crowle’s Stain, 500 ml in a spray bottle



CROWLE'S STAIN



HUNGARIAN RED



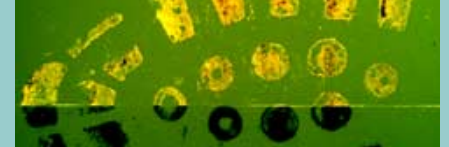
COOMASSIE BLUE



- 1 **AMIDO BLACK**
- 2 **CROWLE'S STAIN**
- 3 **COOMASSIE BLUE**
- 4 **HUNGARIAN RED**



TRACES IN BLOOD, STAINED AND THEN LIFTED WITH A WHITE GELATIN LIFTER



HUNGARIAN RED FLUORESCING ON A WHITE GELATIN LIFTER

Hungarian Red is a recently developed, water-based staining solution for traces in blood. It has a number of advantages compared to other staining solutions. It is safe (water-based), stains well, and can be lifted with a white gelatin lifter. A special characteristic of Hungarian Red is that the lifted traces fluoresce under green light, making it possible to visualize weak traces, even when they are present on a dark surface.

B - 88000

Hungarian Red set, 100 ml fixative (2% 5-sulphosalicylic acid in water) and 100 ml staining solution, both in 100 ml polyethylene bottles

B - 88001

Hungarian Red staining solution, 100 ml in a polyethylene bottle

B - 88100

Hungarian Red set, 500 ml staining solution and 500 ml fixative, both in 500 ml spray bottles

B - 88101

Hungarian Red, 500 ml staining solution, in spray bottle

B - 89700

Fixative for traces in blood (2% 5-sulphosalicylic acid in water). In spray bottle, 500 ml

B - 89701

Fixative for traces in blood (2% 5-sulphosalicylic acid in water). In polyethylene bottle, 100 ml

Staining of traces in blood

LCV (Leuco Crystal Violet) is a coloring reagent for blood that is based on the blood-catalyzed reaction of hydrogen peroxide with LCV, whereby the colorless LCV is oxidized to the purple crystal violet (the same dye as used in Gentian Violet). Because this oxidation will also occur slowly under the influence of light and oxygen, the contrast of the visualized traces and the background is not permanent. After a period of time the background will also be colored purple.

To maximize the shelf-life, the hydrogen peroxide is separately packaged in an opaque, brown plastic bottle. Before use, the hydrogen peroxide is added to the other solution (in a mixing ratio of 1:4). Both solutions are water-based. The LCV solution already contains fixative, so there is no need to fix blood before staining. In contrast to other staining solutions, LCV is very suitable for porous surfaces.

Cat. No.

B - 88600

Description

Leuco Crystal Violet set, consisting of a 500 ml amber glass bottle containing Leuco Crystal Violet in a fixative (400 ml) and a brown plastic bottle with 100 ml hydrogen peroxide solution.

Gentian Violet

Gentian Violet is a staining solution that contains the dye Crystal Violet. Crystal Violet can be absorbed by the fatty constituents in a fingerprint, thereby coloring it purple. It is primarily used to detect prints on the adhesive side of tapes, labels etc. The color of the stained print is often quite faint. Gentian violet is easy to use, but because of the presence of phenol (poisonous!) in the solution, it should be handled very carefully with suitable gloves and protective clothing. Phenol can be absorbed through the skin, even from dilute solutions. Spilled solution and waste should therefore be handled with caution.

Gentian Violet is supplied as a concentrated, ethanol-based solution that must be diluted before use with water (15-30 times).

B - 81000

Gentian Violet, concentrated solution (ethanol-based), 50 ml in a glass bottle.



Sticky-side powder

This originally Japanese product is used for developing fingerprints on the adhesive side of tapes, labels, etc. The powder and a detergent (Kodak Photoflo) are mixed to a thin paste, which is applied to the adhesive with a brush. Ten to fifteen seconds after application, the excess powder is rinsed off under running tap water.

Sticky-side powder combines good results with the absence of hazardous substances. Research comparing this powder with Gentian Violet showed that each can sometimes develop additional prints after the other has been used.

Sticky-side powder can be supplied as a kit, but the components can also be supplied separately.

**Cat. No.**

B - 89300

Description

Sticky-side powder kit. Small kit containing: 50 g Sticky-side powder, Kodak Photoflo (250 ml), drop-bottle, brush, spoon, and a mixing container

B - 89320

Sticky-side powder, 50 g

B - 89310

Kodak Photoflo, 250 ml



LATENT FINGERPRINT INVESTIGATION

Iodine fuming

Cat. No.	Description
B - 71000	1 Complete set of chemicals for iodine fumer
B - 72000	1 Iodine fumer with rubber balloon
B - 73000	1 Silver plate (for the lifting of prints developed with iodine)
B - 73100	1 Cleaner for polishing the silver plate
B - 74500	1 Iodine fixing solution, benzoflavone based
C - 23000	1 Forceps, 11 cm, rounded
C - 60000	1 Pair of rubber gloves, thin
C - 82000	1 Plastic (polystyrene) box, with lid (12x8x3 cm)
K - 40000	1 Pocket magnifier (3X)

In developing latent prints with iodine, a long-used method, iodine crystals give off vapors (sublimation) that adsorb physically to the oily substances of a fingerprint.

The brown-colored prints that are developed with iodine are not permanent unless fixed. Benzoflavone fixes and also darkens the print.

The iodine fuming technique can be used on both porous and non-porous surfaces. It works best on fresh prints (usually no more than a few days old).

Iodine fumes are toxic and also strongly corrosive.

Since the iodine fuming technique is in principle non-destructive, other techniques can be used afterwards (e.g., the ninhydrin treatment of paper).



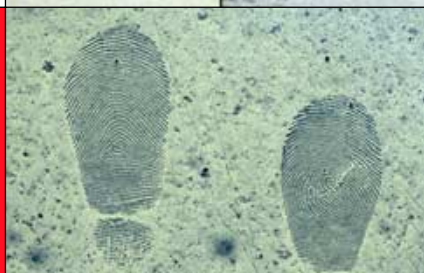
IODINE FUMING KIT

CAT. NO. B - 5000

Dimensions:
44 x 32 x 9 cm
Net weight: 3 kg

1.27 LATENT FINGERPRINT INVESTIGATION

Iodine fuming



Cat. No.

B - 71000

Description

Complete set of chemicals for iodine fumer, which consists of: B-71300, calcium chloride, 100 ml bottle; B-76000, iodine crystals (50 g in a glass bottle); and B-71500, 100 ml bottle filled with glass wool.

The function of the calcium chloride is to dry the air stream carrying the iodine (wet iodine vapor is more corrosive than dry vapor). The glass wool is meant to keep everything in place in the iodine fumer.

B - 72000

Iodine fumer with rubber balloon

B - 76000

Iodine crystals, 50 g in brown glass bottle

B - 73000

Silver plate (for the lifting of prints developed with iodine)

B - 73100

Cleaner for polishing the silver plate

B - 74500

Iodine fixing solution, benzoflavone-based (in a mixture of cyclohexane and dichloromethane). With this fixative, light-brown iodine developed, non-permanent prints will be fixed with a dark blue color.

Small Particle Reagent

Small Particle Reagent (SPR) is a suspension of molybdene-disulfide powder in water with a detergent. The powder particles adhere to a fingerprint as does a fingerprint powder. The gray, shiny prints that are developed with SPR can be lifted (after drying) with gelatin lifters, instant lifters or tape.

Powder suspension can be sprayed, but small articles can also be submerged in it (after diluting the ready-to-use B-86000). The SPR method has the advantage that it can be used on wet and/or dirty/greasy surfaces.

B - 86000

Small Particle Reagent (SPR), 500 ml ready-to-use, in a spray bottle.

Flame technique

The flame technique uses the heavily sooting flame that is produced by burning camphor. An object (for example a bank note or a hammer handle) is held in the smoke of the burning camphor. After the surface is covered with a sufficient amount of soot, the excess is brushed off with a marabou brush.

B - 80000

Camphor, 50 g in a plastic bottle (100 ml).

Fingerprint taking stands

This fingerprint taking stand is 107 cm high and has a formica finished work area sized 52 x 93 cm. The stand has four metal drawers. The table top is fitted with a glass inking slab with an all-metal dust cover, and a cardholder with a magnetic clamping mechanism.

On top of the cardholder, a rubber roller for taking palmprints is mounted.



**FINGERPRINT
TAKING STAND**
CAT. NO. A - 1000



finger- and palmprints



Cat. No.	Description
A - 2000	1 Glass inking slab (40 x 50 cm) complete with a metal dust cover
A - 60000	1 Fingerprint cardholder, with magnetic clamping mechanism, complete with a rubber roller for taking palmprints
A - 51000	1 Heavy-duty fingerprint ink roller, 16 cm wide
A - 21000	1 BVDA fingerprint ink in tube, ca. 55 g
A - 80000	1 Ink spatula
A - 73000	1 Box of 100 disposable ink-cleaner tissues
A - 72000	1 Ink cleaner, 100 ml bottle

These items can also be supplied separately

Fingerprint taking stands

Cat. No.	Description
XA015000	1 Glass inking slab, white
A - 60200	1 Fingerprint cardholder, with magnetic clamping mechanism, complete with a rubber roller for taking palmprints
A - 50000	1 Heavy-duty fingerprint ink roller, 10 cm wide
A - 21000	1 BVDA fingerprint ink in tube, about 55 g
A - 80000	1 Ink spatula
A - 73000	1 Box of 100 disposable ink-cleaner tissues
A - 72000	1 Ink cleaner, 100 ml bottle
A - 81000	1 Cleaning cloth

These items can also be supplied separately.

TABLE-TOP FINGERPRINT TAKING STAND

CAT. NO. A - 1500

*Dimensions:
60 x 30 x 32.5 cm*



This compact table-top fingerprint taking stand provides the correct height for finger- and palmprint taking when it is placed on a desk or table.

Compact kit



This kit contains all the necessary equipment and materials for taking finger- and palm-prints in the conventional way. It can be used at the police station, but also in the field.

COMPACT FINGER- AND PALMPRINT TAKING KIT

CAT. NO. A - 12000

Dimensions:
44 x 32 x 9 cm
Weight: 4 kg

Cat. No.	Description
A - 21000	1 BVDA fingerprint ink in tube, about 55 g
A - 52000	1 Ink roller, 6.5 cm wide, in aluminum bracket and with plastic handle
A - 60100	1 Rubber roller for taking palmprints, mounted on a plexiglass strip
A - 61000	1 Fingerprint cardholder
A - 70000	1 Removal, a waterless hand cleaner, 100 ml
A - 80000	1 Ink spatula
A - 81000	1 Cleaning cloth
A - 86000	1 Glass inking slab (with sanded edges, 15 x 20 cm)
C - 85000	1 Polystyrene box

These items can also be supplied separately.



Fingerprint cardholder

Cat. No.

A - 61000

Description

Fingerprint cardholder. Suitable for fingerprint cards up to 25 cm wide. The cardholder is made of black epoxy-coated steel on a lacquered wooden base.

A - 61100

Fingerprint cardholder like A-61000 except that both holder and base are made of black epoxy-coated steel.



Fingerprint ink

A - 21000

BVDA fingerprint ink in tube. Contents: about 55 g

A - 21200

Fingerprint ink, Arets, in tube (about 35 g)

A - 21100

Fingerprint ink, Bison, in tube (about 22 ml)



Instant fingerprint pads

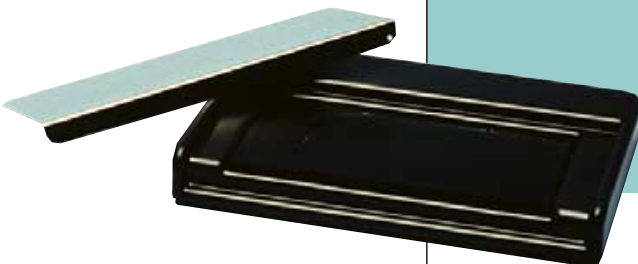
A - 28000




Instant fingerprint pad, for post-mortem fingerprinting. The pad is round (cross section 5 cm) in a housing made of plastic.

A - 25000

Instant BVDA fingerprint pad. The rectangular Porelon pre-inked pad (5 x 10 cm) has a light-weight polypropylene housing.

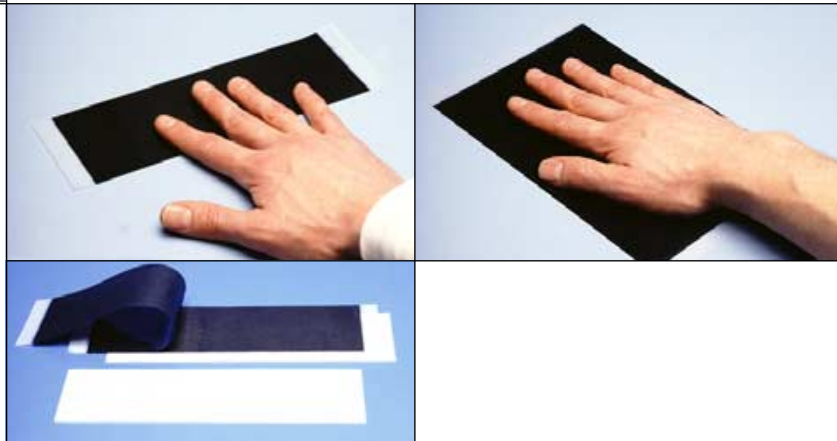
The lid (chromed steel) closes magnetically to ensure dust-proof storage.



	<p style="text-align: center;">Instant fingerprint pads</p> <p>Cat. No. A - 29000</p> <p>Description Instant palmprint inkroll. The pre-inked roll (Porelon) is suitable for taking palmprints, for at least two years (under normal circumstances). The inkroll is mounted in a dustproof steel casing with a durable black epoxy coating.</p>
	<p>A - 27000</p> <p>A - 26500</p> <p>Easy Print inkpad EP-35B (the usable area of the inkpad is: 12 x 5.5 cm). The unit can be attached to a table with screws. The housing is made of plastic; the inkpad is ceramic and provides prints of a high quality. Same as A-27000, but cannot be attached to a table.</p>
	<p>A - 27500</p> <p>Easy Print instant palmprint inkroll. The pre-inked roll is 17.5 cm long and mounted in a plastic casing (21 x 9.5 x 6 cm). The inkroll is made of a ceramic material and provides prints of a high quality. The ink leaves very little residue and is easily removed from the hands. A foam pad (25 x 25 x 1.2 cm) for taking the palmprint is included.</p>

Printake

Printake consists of a ready-to-use fingerprint ink applied on two polyester foils, which have been sandwiched together. After peeling apart, both foils can be used for finger- or palmprint taking. The quality of the obtained prints is not fine but usually sufficient. Printake is an excellent product for elimination prints. Its ink is also much easier to remove from the hands than regular fingerprint ink.



<p>Cat. No. A - 22000</p>	<p>Description Printake (for taking fingerprints), size: 250 x 75 mm. Box of 100.</p>
<p>A - 24000</p>	<p>Printake (for taking palmprints), size: 250 x 150 mm. Box of 100.</p>
<p>A - 24500</p>	<p>Printake retainer pad. This non-skid plastic pad (75 mm wide) is placed underneath Printake during fingerprinting and prevents it from slipping.</p>

Printake**Cat. No.****Description**

A - 21500

Printake booklet (size: 125 x 75 mm) containing 10 sheets of Printake, in a binder.

Ink rollers

A - 50000

Heavy-duty fingerprint ink roller, specially suited for rolling out fingerprint ink on a glass plate to obtain a uniform thin film. The roller is 10 cm wide and is fitted in a steel bracket, with a lacquered wooden handle.

A - 51000

Like A - 50000, but with a 16 cm wide rubber roll.

A - 52000

Ink roller with a red plastic handle. It is also useful for replacing the cover sheet on gelatin lifters or adhering the backing sheet of Instant Lifters to the adhesive part. The roll is 6.5 cm wide.

A - 52500

Like A - 52000, but with a 11.5 cm wide roller.

A - 55000

Ink roller, specially made for the inking of the palms of the hand. The camber-shaped roller is 6 cm wide and has a lacquered wooden handle.

**(Semi-)inkless products**

The Perfect Print inkpads are made of a ceramic material in a plastic housing and use an (almost) colorless ink. The prints obtained with these pads are of excellent quality. No special paper is needed, as they work with ordinary paper. The light-colored ink can easily be wiped off the fingers or washed off with water and soap. Ideally suited for taking elimination prints. The pads are available in several different sizes.

A - 25500

Perfect Print fingerprint pad, round. The ceramic pad has a 38 mm diameter. Capacity: about 1 200 prints.

A - 40600

Perfect Print fingerprint pad, round. The ceramic pad has a 64 mm diameter. Capacity: about 4 800 prints.

A - 25500**A - 40600**

(Semi-)inkless products



Cat. No.
A - 25600

Description
Perfect Print fingerprint pad, rectangular, with outside dimensions 8 x 15 cm. The usable area of the inkpad is approximately 9.5 x 6.5 cm. The unit can be attached to a table with screws. Capacity: about 16,000 prints.

A - 40700

Perfect Print fingerprint pad, rectangular, thin. The ink pad is 45 x 56 mm (outside dimensions). Capacity: about 500 prints.

A - 40000

Pocket Print, for taking elimination prints. Contains a pad with 50 sheets of treated paper and an inkless pad (in the cover flap).



Miscellaneous

A - 71500

Kresto hand cleaner. Mild detergent with abrasive, in tube (250 ml). Specially suited for cleaning of fingers and palms after fingerprinting with ink.

A - 70000

Removal, a waterless cleaner, in glass bottle (100 ml).

A - 72000

Ink-cleaner (fluid for dissolving fingerprint ink from rollers and glass plate), in glass bottle, 100 ml.

Miscellaneous



Cat. No.

Description

A - 72500

Glass cleaner, detergent foam (aerosol can, 400 ml).

A - 73000

Towelettes, individually sealed tissues, impregnated with isopropanol, for cleaning ink from the hands. Box of 100.

A - 80000

Ink spatula, red plastic, 15 cm long. For spreading of fingerprint ink on the inking slab.

A - 86000

Glass inking slab, 15 x 20 cm, with sanded edges.

A - 87000

Glass inking slab, 15 x 30 cm, with sanded edges.



A - 41000

Retabs, special self-adhesive labels for use on fingerprint cards, 500 labels in a dispenser box. When a rolled fingerprint is of insufficient quality, a "retab" label can be applied and the finger rolled again. An aluminum intermediate layer makes these labels non-transparent (in contrast to normal labels), thus preventing problems when the prints are scanned for storage in an AFIS-system.



A - 42000

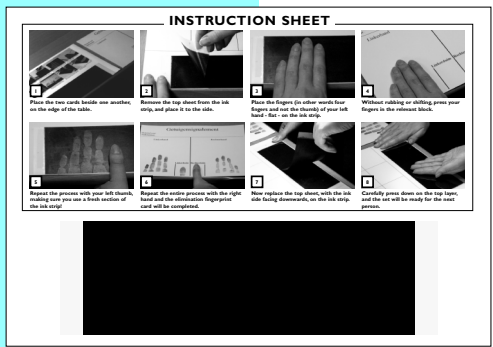
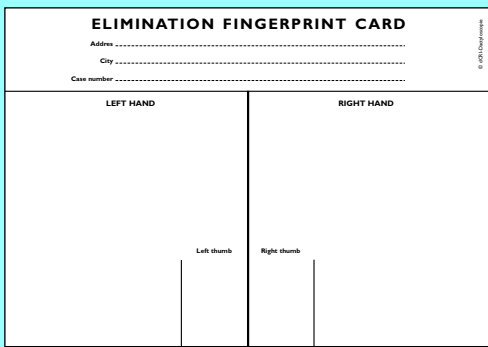
PrePrint, disposable pads (300 in a box) impregnated with a special (non-poisonous) fluid. When used before fingerprinting, the obtained impressions will be of better quality (especially with overly dry or moist fingers).



FINGER- AND PALMPRINT TAKING

Elimination fingerprint set

Cat. No.	Description
A - 30000	Basic pack, containing 25 instruction sheets and 75 elimination fingerprint cards, packaged in a sturdy cardboard box with a lid.
A - 30100	Instruction sheets, 100 pieces, packaged in a sturdy cardboard box with a lid.
A - 30200	Elimination fingerprint cards, 100 pieces, packaged in a sturdy cardboard box with a lid.



Both simple and customer-friendly, this system offers excellent assistance to the crime scene officers in investigating common crimes such as housebreaking. In order to differentiate between the fingerprints of the regular residents and unwanted visitors, elimination prints must be available. Until recently, obtaining elimination prints took a great deal of time. It is unusual for all residents of the house to be at home when the crime scene officer visits for the investigation of the crime. And if the people involved are asked to come to the police station, the time is often unsuitable, or the station may not have adequate manpower or equipment.

Residents can take their own fingerprints using this set, which was developed specially for this purpose by the Fingerprint Department of the CRI (Central Criminal Intelligence Information Service) in Holland. The crime scene officer leaves the set with the residents after processing the crime scene, and the set can then be used by the persons involved, at a time which suits them. Use is extremely simple, and the enclosed instructions are easy to understand. Residents then place their elimination fingerprint card in an enclosed return envelope, and send it to the police agency. If a freepost number is used, they do not even need to affix a postage stamp.

The set of instructions depicted above shows just how easy it is to use the system.

- The officer leaves one card with an ink strip at the home, together with the same number of elimination fingerprint cards as there are residents.
- The card with the ink strip also contains photographic instructions.
- The elimination fingerprint card offers enough space for the case number and an address.

In order to protect the privacy of those involved, no other personal details are requested by this system.

Nonetheless, in this connection, residents should be advised in advance about the one-time and selective use that will be made of their fingerprints. An accompanying letter containing this information proved more than sufficient during the trial period for this product.

In the case of serious crimes, ten-finger cards, including palm prints, are needed to prepare a complete record (with palm prints and rolled fingerprints). In other words, the elimination fingerprint set is not suitable for use in serious crimes.

Foot- and tireprint casting kits



This Footprint Investigation kit has been especially composed for the fixing and casting of tire- and footprints found in sand and mud. Apart from the usual tools and plaster, the kit is provided with a special fixative in aerosol form for fixing the surface of the impressions. A release agent is included to facilitate loosening of the casted imprint. A photo ruler, clearly readable against all surfaces, is an important aid in photographing the impression.

Cat. No.

- C - 6000
- C - 12000
- C - 25000
- E - 11000
- E - 15000
- E - 26000
- E - 40100
- E - 47000
- E - 50000
- E - 55000
- E - 59000
- E - 60000
- E - 62000
- E - 63000
- E - 65000
- E - 67000
- E - 68000
- E - 70000

Description

- 1 SLM, aerosol with silicone-based releasing agent
- 1 Plastic spatula
- 1 Forceps, rounded, length 25 cm
- 1 Unifix, aerosol, fixative for shoe- and tireprints
- 1 Universal sprayer, complete with propellant
- 2 kg plaster of Paris
- 1 Casting frame, metal
- 1 Photo ruler
- 1 Brass sieve for plaster, 16 cm diameter, 6 cm high
- 1 Rubber mixing bowl, 2 liter capacity
- 2 Plastic containers for 1 kg plaster each
- 2 Plastic bottles for water, 1 liter capacity
- 5 Plastic footprint markers
- 1 Reinforcement gauze
- 1 Spoon, stainless steel
- 1 Large model plaster dispenser, plastic
- 1 Wire-cutter
- 5 Tongue spatulas (wood)

foot- and tireprint investigation



**FOOTPRINT
INVESTIGATION
KIT**

CAT. NO. E - 1000

Model VS-301

In Samsonite case

Dimensions:

48 x 36 x 13 cm

Net weight: 7 kg

Shoeprint lifting kit

**DUST MARK
LIFTING KIT**
CAT. NO. E - 7000

Dimensions:
48 x 36 x 13 cm
Weight: 7 kg



Contents

Battery-operated HT set (re-chargeable)
Probe
Corona unit
Pack of lifting film (30 x 38 cm)
Earth plate and earth lead
Charger for batteries in the HT set

Consumables

Cat. No.

E - 701000
E - 701500

Description

Lifting film, 50 sheets, 30 x 38 cm
Lifting film, roll, 40 cm x 30 m

The Dust Mark Lifting Kit (DLK) contains equipment and materials for the electrostatic lifting of footwear impressions.

By charging the aluminized side of the black plastic lifting film with a high voltage, the footwear impression is transferred to the film.

For the electrostatic charging of the film a probe or a corona unit can be used.

Because the shoeprint is lifted onto a uniform black surface, the impression is much more visible and can be photographed better and more easily than before lifting.

The film with the lifted print is best transported and stored after taping it to the bottom of a clean, shallow cardboard box (for example, a box that photographic paper comes in). Never use a box constructed of gray uncoated cardboard, as this is very dusty.

Lifting can be done not only from hard floors, but also from textile, newspaper, corrugated carton, etc.

After a footwear impression has been lifted with the DLK, it can subsequently be lifted with a black gelatin lifter. Often, this gives a better (cleaner) lift than if the DLK had not been used.

Because the DLK lifts only a part of the dust, enough material remains for a lift with a gelatin lifter.

Gelatin shoeprint lifters

For the lifting of footwear impressions (made with dust or dirt) no material is better suited than black gelatin lifters, due to its low tack. Whereas synthetic materials with a high tack tend to lock in air bubbles upon application, a black gelatin lifter easily lifts a complete print without disturbing the surface on which the print is found. Furthermore, the black gelatin layer absorbs light so strongly that it can be over-exposed many times. When a black object, next to the lifter, shows up white on a photograph, the lifter is still dark gray. Its light absorption enables photographing of even very faint impressions.

Apart from being available in several sizes, the (black and white) lifters are also available with different backing materials: rubber (on which notes are easily made) and polyester (a little less flexible). The shoeprint sizes are either 13 or 18 cm wide and 36 cm long.

In some countries, transparent lifters are used for lifting footwear impressions. These are then photographed with a dark-field method.

White gelatin lifters are not intended for the lifting of footwear impressions in dust (black lifters give a much better contrast) but are well suited for the lifting of prints in blood (finger- or shoeprints) that have been stained with protein dyes, such as Amido Black or Hungarian Red. Also, shoeprints made with muddy shoes on non-absorbing surfaces, which have been stained with an aqueous solution of Safranin O (1 g/liter), can be lifted with white gelatin lifters. The fluorescence of Safranin O (using green light and red camera filter) is then photographed (poster of M.J.M. Velders at the IAI conference in Danvers/MA/USA; 1997).

All gelatin lifters are packaged in sealed envelopes made of a laminate material. This material protects the gelatin layer against moisture. Thus the tack is retained, even after prolonged storage.

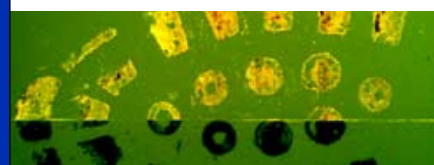
Cat. No.	Description
B - 12000	Footprint lifter, black, with rubber backing, 13 x 36 cm, pack of 2 sheets
B - 12500	Footprint lifter, black, with rubber backing, 18 x 36 cm, pack of 2 sheets
B - 120000	Footprint lifter, black, with polyester backing, 13 x 36 cm, pack of 10 sheets
B - 125000	Footprint lifter, black, with polyester backing, 18 x 36 cm, pack of 10 sheets
B - 15000	Footprint lifter, white, with rubber backing 13 x 36 cm, pack of 2 sheets
B - 15500	Footprint lifter, white, with rubber backing 18 x 36 cm, pack of 2 sheets
B - 150000	Footprint lifter, white, with polyester backing, 13 x 36 cm, pack of 10 sheets
B - 155000	Footprint lifter, white, with polyester backing, 18 x 36 cm, pack of 10 sheets
B - 18000	Footprint lifter, transparent, 13 x 36 cm, pack of 2 sheets
B - 18200	Footprint lifter, transparent, 18 x 36 cm, pack of 2 sheets



Part of a shoeprint, lifted from corrugated cardboard.



White gelatin lifters can be used for the lifting of finger- and shoeprints in blood, which are stained with protein dyes like Hungarian Red, Amido black, Crowle's stain or Coomassie blue.



Hungarian Red on a white gelatin lifter, fluorescing under green light (see page 1.23).

Casting material for footwear impressions

Cat. No.	Description
E - 26000	Plaster of Paris for shoe impressions, white, extra hard. Package of 800 g in a pouch made of laminate material, for prolonged storage.
E - 26500	FT-Print, a synthetic plaster of Paris for shoe impressions, white. Due to its extreme hardness (300 N/mm ²) strong casts can be made with less plaster. Package of 400 g in a pouch made of laminate material, for prolonged storage. Mix with 100 ml water.

Release agent

C - 6000	SLM, silicone-based release agent, 150 ml (6 oz) aerosol can.
----------	---

Fixative aerosol

Unifix will penetrate the porous structure of soil and sand to fix them, moist or not. The surface of the impression will be sealed and impenetrable for the plaster after preparation with Unifix.

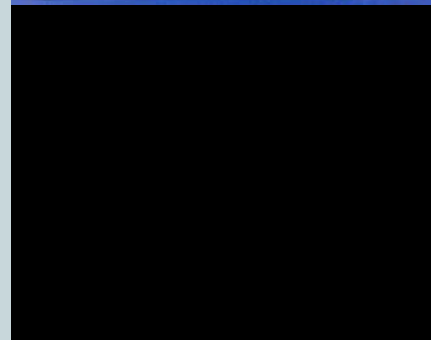
E - 11000	UNIFIX-16, shoe- and tireprint fixative. Aerosol can of 400 ml.
E - 11100	UNIFIX-6, shoe- and tireprint fixative. Aerosol can of 150 ml.

For the casting of footwear impressions in snow with plaster of Paris, a special aerosol fixative is used: Snowprint Wax. As the name suggest, it covers the surface of the impression with a thin layer of a brown-colored waxy material. After this has dried, the plaster of Paris is poured into the impression. The color of the wax also enhances contrast for photography.

E - 11500	Snowprint Wax, fixative for shoe impressions in snow. Aerosol can of 300 ml.
-----------	--

Universal atomizer

E - 15000	Universal sprayer, consists of a glass reservoir (180 ml) and a replaceable pressure unit with a non-CFC propellant.
E - 15100	Pressure unit for E-15000 (the amount of propellant will spray about 450 ml of fluid).



FOOT- AND TIREPRINT INVESTIGATION

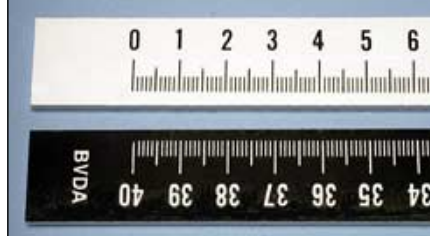
Plaster-mixing bowl / sieve

- E - 50000 Brass sieve, for sieving plaster of Paris. Also for the application of a thin layer of dry plaster that, after saturation by spraying with water, is followed by pouring a plaster/water mixture. Another application is the casting of impressions found in shallow water.
- E - 55000 Plaster-mixing bowl, thick-walled rubber, 2 liter capacity.



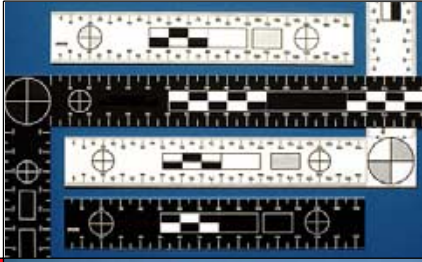
Miscellaneous

- E - 40100 Metal casting frame, extendable from 21 to 40 cm. The width is 14 cm.
- E - 47000 Photo ruler with cm and mm markings, 40 cm in length. One side of the ruler is white with black printing. The other side is black with white printing.
- E - 48000 Photo ruler for photographing footprints, with a hinged L-shape. The long side is 35 cm and the short one 20 cm. One side of the scale is white with black printing; the other side is black with white printing.



Miscellaneous

E - 49000



Set of two scales (one L-shaped and one short ruler) for photographing of evidence. One side of both rulers is white with black printing of cm and mm markings. The other side is black with white printing and has markings at every 0.5 cm.

The L-shaped scale has arms of 15 and 30 cm, respectively; the short ruler is 15 cm long.

F - 57500/57510



Shoe covers with the text "POLICE" in relief on the entire sole area. Used by the first officers to arrive at the scene of a crime, they can save time for the crime scene officer later, since police shoeprints can then be eliminated at first glance.

The shoe covers are of a sturdy quality, with a transparent sole area and black upper.

The shoe covers are available in two sizes: medium (F-57500: European shoe size 40-42) and large (F-57510: size 43-45).

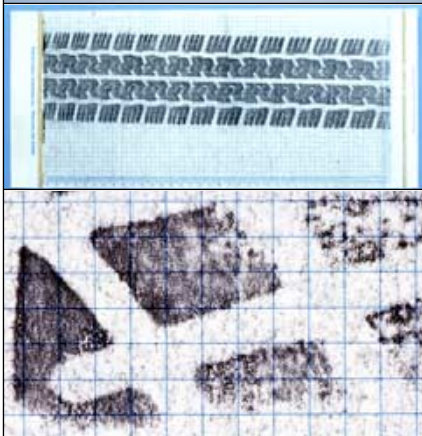


A - 43000



Colorless inkpad with special paper (100 sheets per set) for making test impressions of shoe outsoles. The detail in the prints is excellent. The chemically treated paper measures 178 x 355 mm.

E - 9500



Podotrack, a material for making test impressions of shoes and tires (box of 100). Its action is based on the use of extra sensitive carbon paper. First the cover sheet of the (attached) adhesive film is removed and adhered to the carbon paper. The test impression is made by a shoe stepping on or a tire rolling over the material. Then the carbon paper (36 x 18.5 cm) is removed and the adhesive sheet with the impression is adhered to the backing carton paper (which has a light blue 5 x 5 mm grid printed on it).

Staining of shoeprints in blood

For the staining of shoeprints made in blood, the same reagents and dyes are used as for fingerprints: see page 1.23.